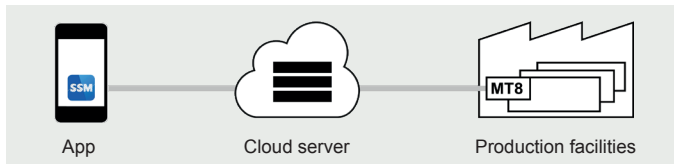


Brief instruction for app «SSM Mobile Tools»



1. General

The «SSM Mobile Tools» app is divided in three subject areas: Company, calculator, and terminal (see A, B, and C). The business areas, products, and locations are displayed under «SSM Insight». «SSM Calculators» offers assistance in calculating the density, weight, positions, and yarn count. And «Mobile Terminal» enables you to retrieve the production data of your factory in real time, no matter where you are.



2. Installing the app

The free app is available for both iPhone and Android. Either visit the App Store or go to Google play and look for SSM mobile tool.



Install the app on your smartphone.

3. Starting and getting to know the app

The app will first lead you to the welcome page. Press the blue **Start** button and follow the further selection on the «SSM Insight» company page with the sub-categories **SSM**, **Products**, and **Location**, which contain more information on the company and the machines (see section A).

In the footer you can now see the further subject areas «Calculator» and «Mobile Terminal». These two sections **B** and **C** are described on page 2.

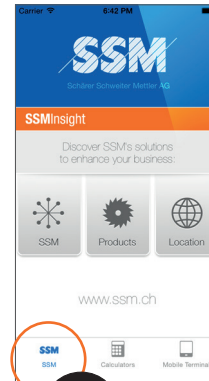
All the navigation keys *Back*, *New*, *Next*, *Go* and **i** are self-explanatory.



4. The three subject areas:

Company

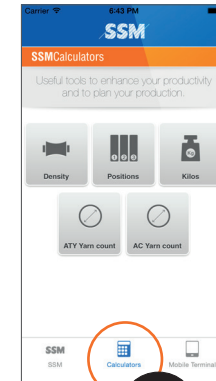
Company, products and locations



Section A

Calculator

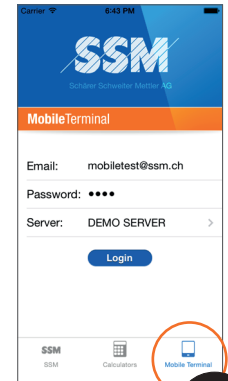
Calculation tool for density, positions, weight, etc.



Section B

Terminal

Real-time checking of production data



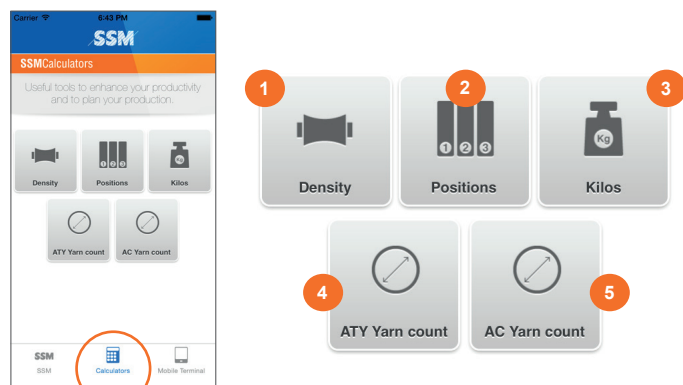
Section C

Section A SSM Insight



Section B SSMCalculators

«SSM Calculators» offers assistance in calculating the density, weight, positions, and yarn count.



Density

1 Package weight:

Package diameter:

Empty tube diameter:

Starting traverse length:

End traverse length:

Calculation of the winding density in g/l.

Number of positions

2 Yarn count units:

Production per day (kg):

Yarn count:

Winding speed (m/min):

Efficiency (%):

Calculation of the number of positions to produce the specified package weight.

Weight

3 Yarn count units:

Yarn count:

Winding speed (m/min):

Efficiency (%):

Working hours per day:

Calculation of the product net weight in kg/day.

Yarn count texturing

4 Yarn count units:

CORE YARN

EFFECT YARN

After stretch:

Yarn tension:

Calculation of the yarn count in dtex or den.

Yarn count covering

5 Yarn count units:

Yarn count covering:

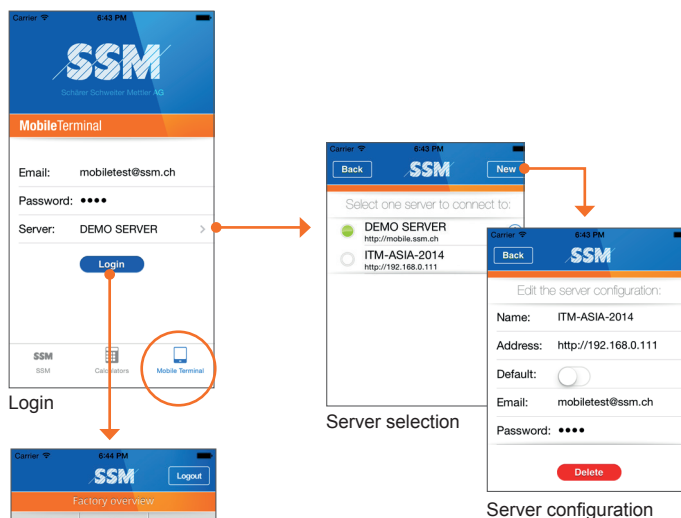
Yarn count elastan:

Draw ratio elastan:

Calculation of the yarn count in dtex or den.

Section C MobileTerminal

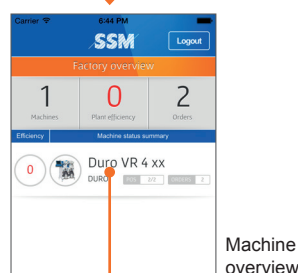
«Mobile Terminal» enables you to retrieve and check the production data of your factory in real time.



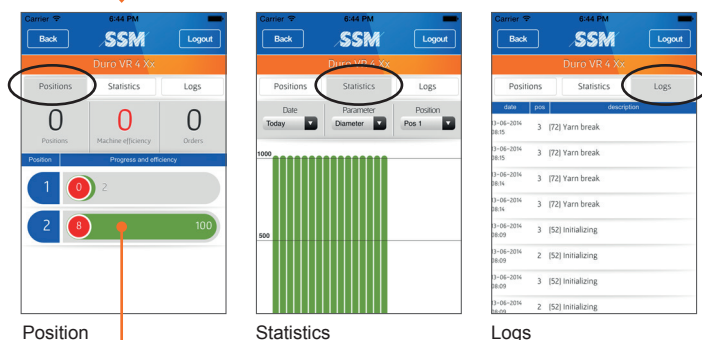
Login

Server selection

Server configuration



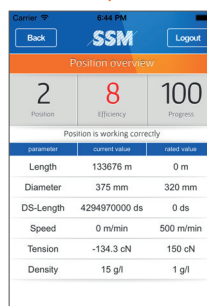
Machine overview



Position status

Statistics

Logs



Status overview with current and rated values per position

SSM Schärer Schweiter Mettler AG
Neugasse 10
8810 Horgen
Switzerland

Tel. +41 44 718 33 11
info@ssm.ch
www.ssm.ch